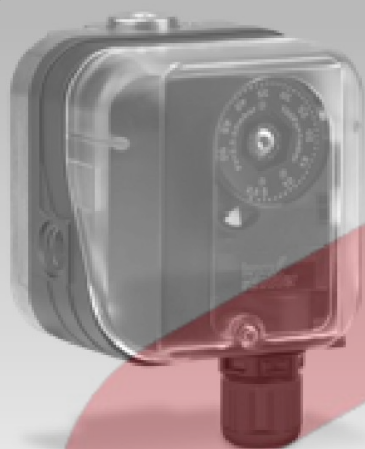


03251234

(D) (GB) (F) (NL) (I) (E) (DK) (S) (N) (P) (GR)
(TR) (CZ) (PL) (RUS) (H) → www.docuthek.com

Operating instructions

Pressure switches for gas DG..B, DG..U



Cert. version 11.17

Safety

Please read and keep in a safe place



Please read through these instructions carefully before installing or operating. Following the installation, pass the instructions on to the operator. This unit must be installed and commissioned in accordance with the regulations and standards in force. These instructions can also be found at www.docuthek.com.

Explanation of symbols

•, 1, 2, 3... = Action
▷ = Instruction

Liability

We will not be held liable for damage resulting from non-observance of the instructions and non-compliant use.

Safety instructions

Information that is relevant for safety is indicated in the instructions as follows:

! DANGER

Indicates potentially fatal situations.

! WARNING

Indicates possible danger to life and limb.

! CAUTION

Indicates possible material damage.

All interventions may only be carried out by qualified gas technicians. Electrical interventions may only be carried out by qualified electricians.

Conversion, spare parts

All technical changes are prohibited. Only use OEM spare parts.

Changes to edition 05.18

The following chapters have been changed:

- Technical data
- Logistics
- Declaration of conformity

Checking the usage

Gas pressure switches DG for monitoring increasing and decreasing gas or air pressure.

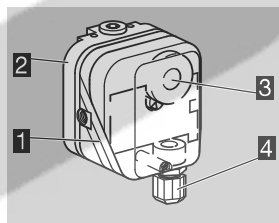
| | Positive pressure | Negative pressure |
|-------|--------------------|-------------------|
| DG..B | Gas, air, flue gas | – |
| DG..U | Gas, air, flue gas | Air, flue gas |

This function is only guaranteed when used within the specified limits – see page 4 (Technical data). Any other use is considered as non-compliant.

Type code

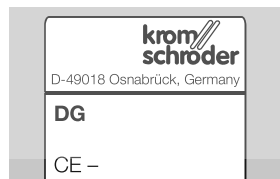
| Code | Description |
|--------------|--|
| DG | Pressure switch for gas |
| 6–500 | Max. setting in mbar |
| B | For increasing positive pressure |
| U | For increasing positive/negative/differential pressure |
| BN | For decreasing positive pressure |
| UN | For decreasing positive/negative/differential pressure |
| G | With gold-plated contacts |
| -3 | Electrical connection via screw terminals |
| -4 | via screw terminals, IP 65 |
| -5 | 4-pin plug, without socket |
| -6 | 4-pin plug, with socket |
| -9 | 4-pin plug, with socket, IP 65 |
| K2 | Red/green pilot LED for 24 V DC/AC |
| T | Blue pilot lamp for 230 V AC |
| T2 | Red/green pilot LED for 230 V AC |
| N | Blue pilot lamp for 120 V AC |

Part designations



- 1 Upper housing section with cover
- 2 Lower housing section
- 3 Hand wheel
- 4 M16 cable gland

Type label



Max. inlet pressure = withstand pressure, mains voltage, ambient temperature, enclosure: see type label.

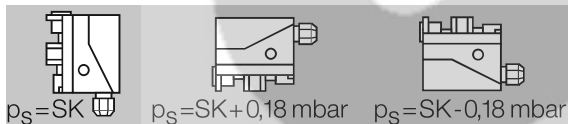
Installation

! CAUTION

Please observe the following to ensure that the DG is not damaged during installation and operation:

- Continuous operation with gases containing more than 0.1 %-by-vol. H₂S or ozone concentrations exceeding 200 µg/m³ accelerate the ageing of elastomer materials and reduce the service life.
- Use approved sealing material only.
- Dropping the device can cause permanent damage. In this event, replace the entire device and associated modules before use.
- Check max. ambient temperature – see page 4 (Technical data).
- When using silicone tubes, only use silicone tubes which have been sufficiently cured.
- Vapours containing silicone can adversely affect the functioning of electrical contacts.
- Condensation or vapours containing silicone must not be allowed to get into the housing. At subzero temperatures malfunctions/failures due to icing can occur.
- When installing outdoors, place the DG in a roofed area and protect from direct sunlight (even IP 65 version). To avoid condensation, a cover with pressure equalization element (Order No. 74923391) can be used.
- Avoid strong impact on the unit.
- In case of highly fluctuating pressures, install a restrictor orifice (Order No. 75456321).

- ▷ Installation position as required, preferably with vertical diaphragm. Then the switching point p_S corresponds to the scale value SK set on the hand wheel. In other installation positions, the switching point p_S will change and no longer correspond to the scale value SK set on the hand wheel. Check the switching point.

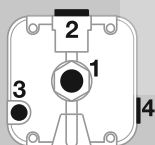


- ▷ The DG must not be in contact with masonry. Minimum clearance 20 mm.
- ▷ Ensure that there is sufficient installation space.
- ▷ Ensure unobstructed view of the hand wheel.

1 Disconnect the system from the electrical power supply.

2 Shut off the gas supply.

3 Ensure that the pipeline is clean.



1 and 2
Positive pressure (Rp 1/4)

3 and 4
Negative pressure (Rp 1/8)

| | Connect | Seal | Free |
|-----------------------------|--|----------|---------------|
| Positive pressure DG..U | 1 | 2 | 3 or 4 |
| Negative pressure DG..U | 2 | 1 | 3 or 4 |
| | 3 | 4 | 1 or 2 |
| | 4 | 3 | 1 or 2 |
| Differential pressure DG..U | 1 or 2 for higher absolute pressure. 3 or 4 for lower absolute pressure. Seal the ports that are not in use. | | |
| Positive pressure DG..B | 1 | – | – |

- 4** If the electrical contacts in the DG could be soiled by dirt particles in the surrounding air or in the medium, use a filter pad (Order No. 74946199) at port **3/4**. On IP 65 units, the filter pad is fitted as standard, see type label.

Wiring

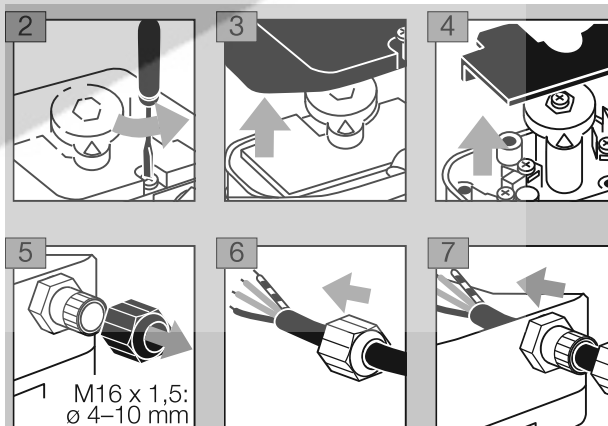
- ▷ If the DG..G has switched a voltage > 24 V and a current > 0.1 A at $\cos \varphi = 1$ or > 0.05 A at $\cos \varphi = 0.6$ once, the gold plating on the contacts will have been burnt through. It can then only be operated at this power rating or higher power rating.
- ▷ Pressure switch DG can be used in Zone 1 (21) and 2 (22) hazardous areas if an isolating amplifier is installed upstream in the safe area as “Ex-i” apparatus pursuant to EN 60079-11 (VDE 0170-7):2012.
- ▷ DG as “simple electrical apparatus” pursuant to EN 60079-11:2012 corresponds to the Temperature class T6, Group II. The internal inductance/capacitance is $L_i = 0.2 \mu\text{H}/C_i = 8 \text{ pF}$.

! CAUTION

Please observe the following to ensure that the DG is not damaged during operation:

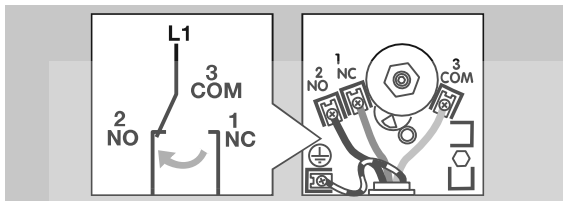
- Note the switching capacity, see page 4 (Technical data).
- ▷ In the case of low switching capacities, such as 24 V, 8 mA, for example, we recommend using an RC module (22 Ω, 1 µF) in air containing silicone or oil.

1 Disconnect the system from the electrical power supply.



M16 x 1,5:
ø 4–10 mm

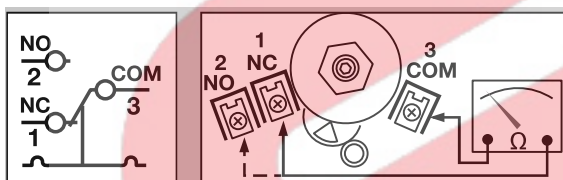
- ▷ Contacts **3** and **2** close when subject to increasing pressure. Contacts **1** and **3** close when subject to falling pressure.



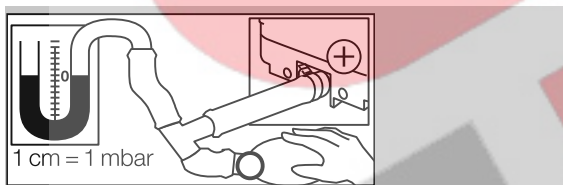
Adjustment

- ▷ The switching point is adjustable via hand wheel.

- 1** Disconnect the system from the electrical power supply.
- 2** Detach the housing cover, see page 4 (Technical data).
- 3** Connect an ohmmeter.



- 4** Set the switching point using the hand wheel.
- 5** Connect a pressure gauge.



- 6** Apply pressure. In doing so, monitor the ohmmeter and the pressure gauge.

| Type | Adjusting range* [mbar] | Switching differential** [mbar] | Max. inlet pressure p_{\max} [mbar] |
|--------|-------------------------|---------------------------------|---------------------------------------|
| DG 6 | 0.4–6 | 0.2–0.3 | 100 |
| DG 10 | 1–10 | 0.25–0.4 | 500 |
| DG 30 | 2.5–30 | 0.35–0.9 | 500 |
| DG 50 | 2.5–50 | 0.8–1.5 | 500 |
| DG 150 | 30–150 | 3–5 | 600 |
| DG 400 | 50–400 | 5–15 | 600 |
| DG 500 | 100–500 | 8–17 | 600 |

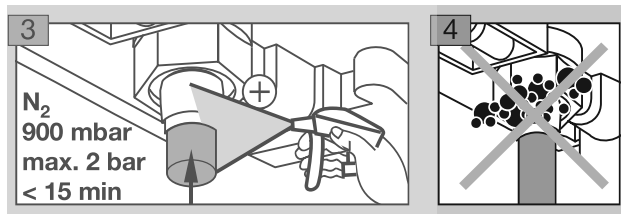
* Adjusting tolerance = $\pm 15\%$ of the scale value.

** Mean switching differential at min. and max. setting.

- ▷ Deviation from the switching point during testing pursuant to EN 1854 Gas and air pressure switches: $\pm 15\%$. For DG 6: EN 1854 Air pressure switches: $\pm 15\%$ or ± 0.1 mbar.
- ▷ If the DG does not trip at the desired switching point, correct the adjusting range using the hand wheel. Relieve the pressure and repeat the process.

Tightness test

- 1** Shut off the downstream gas pipeline close to the valve.
 - 2** Open the valve and the gas supply.
- ▷ Check all used ports for tightness.



Maintenance

Check the tightness and function of the DG every year, or every six months if operated with biogas.

- ▷ A function check can be carried out in case of decreasing pressure control e.g. with the PIA.
- ▷ After carrying out the maintenance work, check for tightness, see page 3 (Tightness test).

Technical data

Safety information, see Safety manual DG (D, GB) – www.docuthek.com.

Ambient conditions

Not suitable for cleaning with a high-pressure cleaner and/or cleaning products.

Maximum medium and ambient temperatures: -20 to +80°C.

Long-term use in the upper ambient temperature range accelerates the ageing of the elastomer materials and reduces the service life (please contact manufacturer).

Enclosure: IP 54 or IP 65. Safety class: 1.

Mechanical data

Gas type: natural gas, town gas, LPG (gaseous), flue gas, biogas (max. 0.1 %-by-vol. H₂S) and air.

Max. inlet pressure p_{\max} = withstand pressure, see page 3 (Adjustment). Max. test pressure for testing the entire system: temporarily < 15 minutes 2 bar.

Diaphragm pressure switch, silicone-free.

Diaphragm: NBR.

Housing: glass fibre reinforced PBT plastic with low gas release, lower housing section: AlSi 12.

Max. tightening torque, see Technical Information bulletin DG (D, GB, F) – www.docuthek.com.

Weight: 270 to 320 g.

Electrical data

Switching capacity:

| | U | I (cos φ = 1) | I (cos φ = 0,6) |
|-------|---------------|-----------------------|-------------------------|
| DG | 24 – 250 V AC | 0.05 – 5 A | 0.05 – 1 A |
| DG..G | 5 – 250 V AC | 0.01 – 5 A | 0.01 – 1 A |
| | 5 – 48 V DC | 0.01 – 1 A | |

Line diameter: 0.5 to 1.8 mm (AWG 24 to AWG 13).

Line entrance: M16 x 1.5, clamping range: diameters of 4 to 10 mm.

Electrical connection type: screw terminals.

Designed lifetime

This information on the designed lifetime is based on using the product in accordance with these operating instructions. Once the designed lifetime has been reached, safety-relevant products must be replaced. Designed lifetime (based on date of manufacture) in accordance with EN 13611, EN 1854 for pressure switches:

| Medium | Designed lifetime | |
|--------|-------------------|--------------|
| | Switching cycles | Time [years] |
| Gas | 50,000 | 10 |
| Air | 250,000 | 10 |

You can find further explanations in the applicable rules and regulations and on the afecor website (www.afecor.org). This procedure applies to heating systems. For thermoprocessing equipment, observe local regulations.

Accessories

See Technical Information DG (D, GB, F) – www.docuthek.com

Logistics

Transport

Protect the unit from external forces (blows, shocks, vibration).

Transport temperature: -20 to +80°C (-4 to +176°F).

Transport is subject to the ambient conditions described.

Report any transport damage on the unit or packaging without delay.

Check that the delivery is complete, see page 1 (Part designations).

Storage

Storage temperature: -20 to +40°C (-4 to +104°F).

Storage is subject to the ambient conditions described.

Storage time: 6 months before using for the first time. If stored for longer than this, the overall service life will be reduced by the corresponding amount of extra storage time.

Packaging

The packaging material is to be disposed of in accordance with local regulations.

Disposal

Components are to be disposed of separately in accordance with local regulations.

Certification

Declaration of conformity

We, the manufacturer, hereby declare that the product DG with product ID No. CE-0085AP0467 complies with the requirements of the listed Directives and Standards.

Directives:

- 2014/35/EU – LVD

Regulation:

- (EU) 2016/426 – GAR

Standards:

- EN 13611:2015+AC:2016
- EN 1854:2010

The relevant product corresponds to the tested type sample.

The production is subject to the surveillance procedure pursuant to Regulation (EU) 2016/426 Annex III paragraph 3.

Elster GmbH

Scan of the Declaration of conformity (D, GB) – see www.docuthek.com

SIL, PL

The pressure switches are suitable for single-channel systems (HFT = 0) up to SIL 2/PL d, and up to SIL 3/PL e when two redundant pressure switches are installed in a double-channel architecture (HFT = 1), provided that the complete system complies with the requirements of EN 61508/ISO 13849. The safety function value which is actually achieved is derived by taking all components into account (sensor – logic – actuator). For this, the demand rate and structural measures to avoid/detect nonconformity are to be observed (e.g. redundancy, diversity, monitoring).

Characteristic values for SIL/PL: HFT = 0 (1 device), HFT = 1 (2 devices), SFF > 90, DC = 0, type A/category B, 1, 2, 3, 4, high demand mode, CCF > 65, $\beta \geq 2$.

| $PFH_D = \lambda_D = \frac{1}{MTTF_d} = \frac{0.1}{B_{10d}} \times n_{op}$ | | |
|--|-------|------------------------|
| U | I | B _{10d} value |
| 24 V DC | 10 mA | 6,689,477 |
| 230 V AC | 4 mA | |
| 24 V DC | 70 mA | 4,414,062 |
| 230 V AC | 20 mA | |
| 230 V AC | 2 A | 974,800 |

RoHS compliant, Eurasian Customs Union, AGA approved



Directive on the restriction of the use of hazardous substances (RoHS) in China

Scan of the Disclosure Table China RoHS2 – see certificates at www.docuthek.com

Contact

If you have any technical questions, please contact your local branch office/agent. The addresses are available on the Internet or from Elster GmbH.

We reserve the right to make technical modifications in the interests of progress.

Honeywell

**krom/
schroder**

Elster GmbH
Strotheweg 1, D-49504 Lotte (Büren)
Tel. +49 541 1214-0
Fax +49 541 1214-370

hts.lotte@honeywell.com, www.kromschroeder.com