

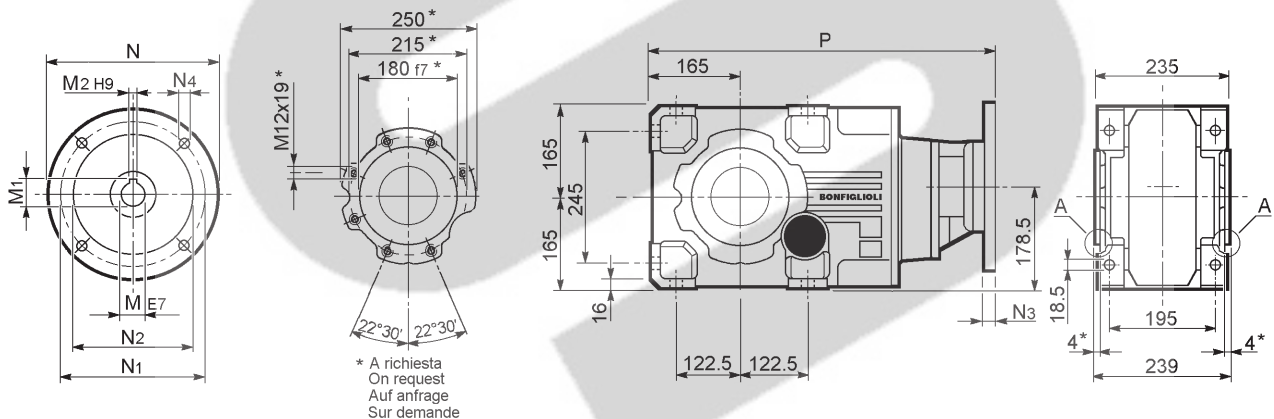
NR-ND-NH UR-UD-UH-US	A 602 - A 603									
	M	M ₁	M ₂	N	N ₁	N ₂	N ₃	N ₄	P	Kg
A 602 - A 603_P 80	19	21.8	6	200	165	130	—	M10x12	535	84
A 602 - A 603_P 90	24	27.3	8	200	165	130	—	M10x12	535	84
A 602 - A 603_P 100	28	31.3	8	250	215	180	—	M12x16	545	88
A 602 - A 603_P 112	28	31.3	8	250	215	180	—	M12x16	545	88
A 602 - A 603_P 132	38	41.3	10	300	265	230	16	14	581	91
A 602 - A 603_P 160	42	45.3	12	350	300	250	23	18	633	96
A 602 - A 603_P 180	48	51.8	14	350	300	250	23	18	633	96

A Nella forma costruttiva "U..." il piano di appoggio 250 è rientrante rispetto al profilo esterno dei piedi.

A In Version U the supporting surface 250 recedes from outer feet profile.

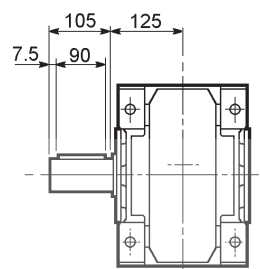
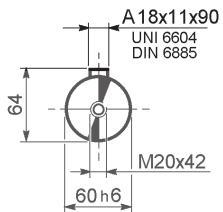
A In der U-Bauform weist die Auflagefläche mit 250 gegenüber dem Außenprofil der FüÙe ein geringeres MaÙ auf.

A Pour la forme de construction "U" la surface 250 est en retrait du profil externe des pattes.

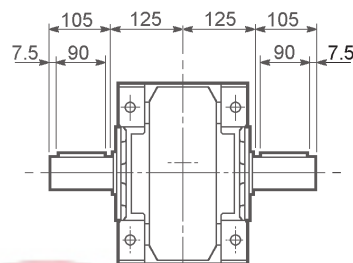
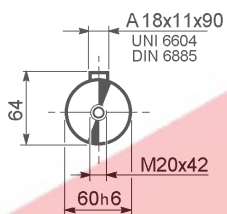


NR-ND-NH UR-UD-UH-US	A 604									
	M	M ₁	M ₂	N	N ₁	N ₂	N ₃	N ₄	P	Kg
A 604_P 63	11	12.8	4	140	115	95	—	M8x19	587	88
A 604_P 71	14	16.3	5	160	130	110	—	M8x16	587	88
A 604_P 80	19	21.8	6	200	165	130	—	M10x12	606	90
A 604_P 90	24	27.3	8	200	165	130	—	M10x12	606	90
A 604_P 100	28	31.3	8	250	215	180	—	M12x16	616	94
A 604_P 112	28	31.3	8	250	215	180	—	M12x16	616	94

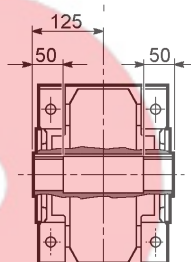
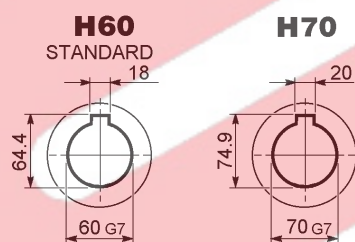
A 60...NR
A 60...UR



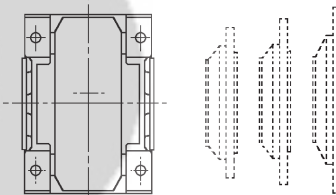
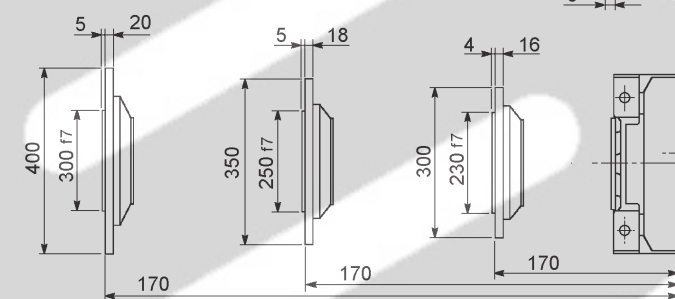
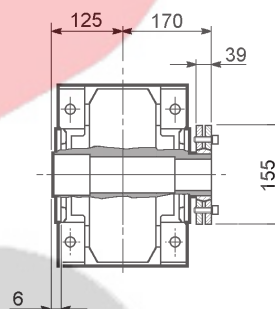
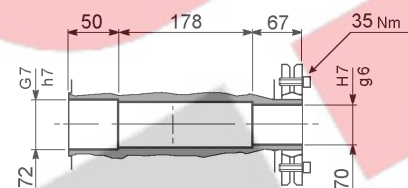
A 60...ND
A 60...UD



A 60...NH
A 60...UH



A 60...US



A 60...F...

